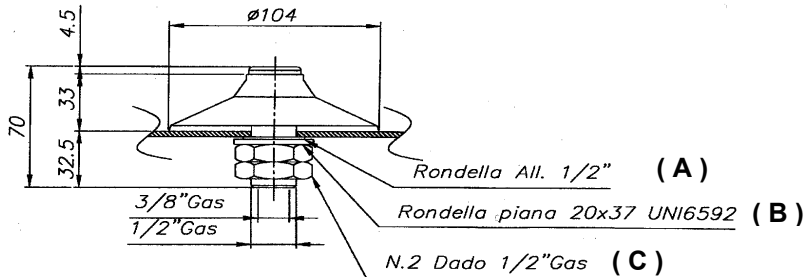


BIN AERATOR "VB" - Installation manual



DRAWING "1"



INSTALLATION

Make a hole of about 23 mm (1") as showed on the drawing "2". Insert the "VB" bin aerator from the inside of the silo putting the threaded part out of silo. Mount the washer (A), the washer (B) and tighten the first nut (C) and the second nut (C).

INSTALLATION

Bringen Sie gem. Skizze "2" die Befestigungsbohrungen von 23mm Durchmesser an der Silowand an. Führen Sie den Vibrationsbelüfter „VB“ mit dem Gewindeanschluss von innen nach aussen. Führen Sie zuerst die Unterlegscheibe (A), dann den Sicherungsring (B) über den Gewindeanschluss. Schrauben Sie die Mutter (C) und die Kontermutter (C) auf den Gewindeanschluss. Ziehen Sie beide Muttern fest.

INSTALLATION

Faire un trou dans le silo de 23 mm (1 pouce), comme indiqué sur le dessin 2. Insérer le "VB" par l'intérieur du silo en faisant sortir la partie filetée. Appliquer la rondelle (A), la rondelle plate (B), serrer le premier écrou jusqu' en butée sur le silo (C), et serrer le contre écrou (C). Puis terminer par le raccordement pneumatique.

INSTALLAZIONE

Applicare un foro sul silo (o tramoggia) di circa 23 mm (1") come indicato nel disegno "2". Inserire il vibrofluidificatore "VB" dalla parte interna del silo, facendo uscire la parte filettata. Applicare la rondella (A), la rondella piana (B) e serrare il primo dado (C) fino a battuta sul silo. Applicare il secondo dado e serrare a battuta sul primo. Applicare quindi la parte pneumatica.

Working pressure:

min 2 bar (29 psi)
max 6 bar (87 psi)

Arbeitsdruck:

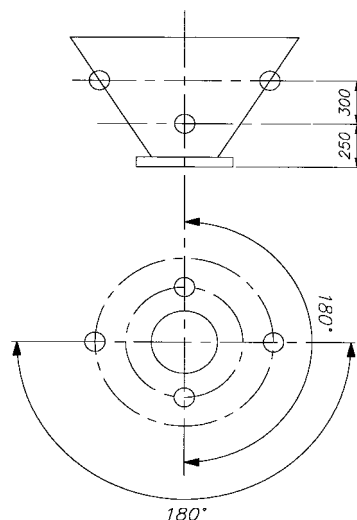
min 2 bar (29 psi)
max 6 bar (87 psi)

Pression de service:

min. 2 bar (29 psi)
max 6 bar (87 psi)

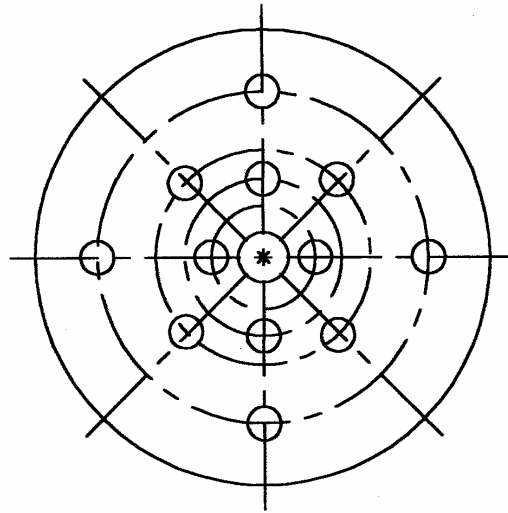
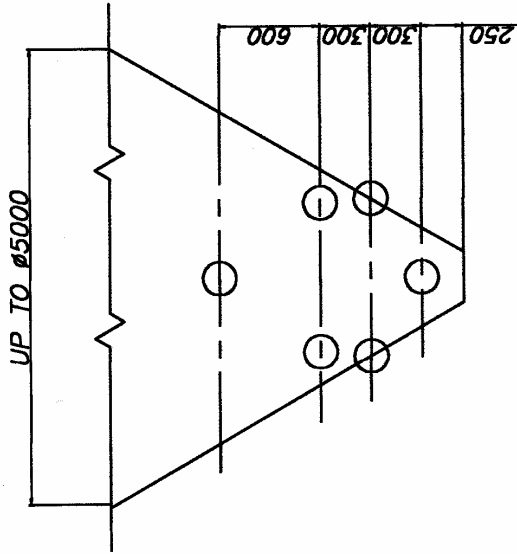
Pressione di esercizio:

min. 2 bar (29 psi)
max 6 bar (87 psi)

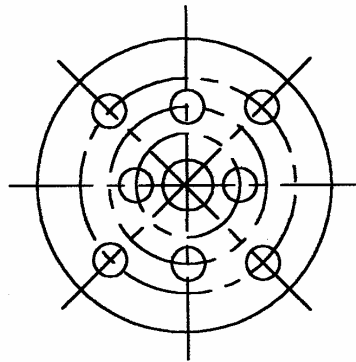
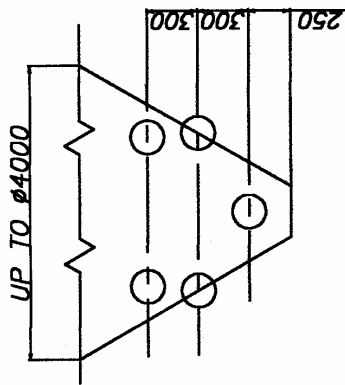


DRAWING "2"

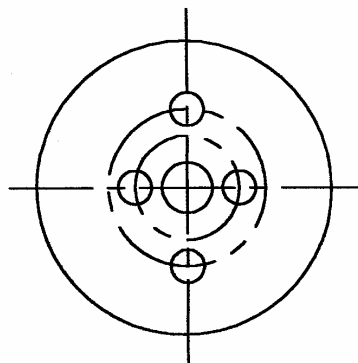
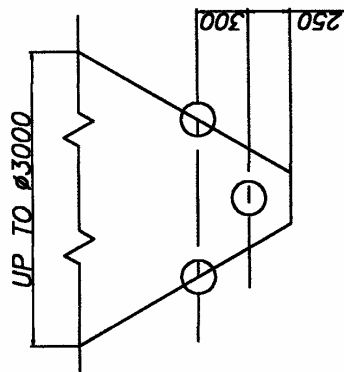
VB - Vibrating Bin Selection Chart



N.12 VB



N.8 VB



N.4 VB